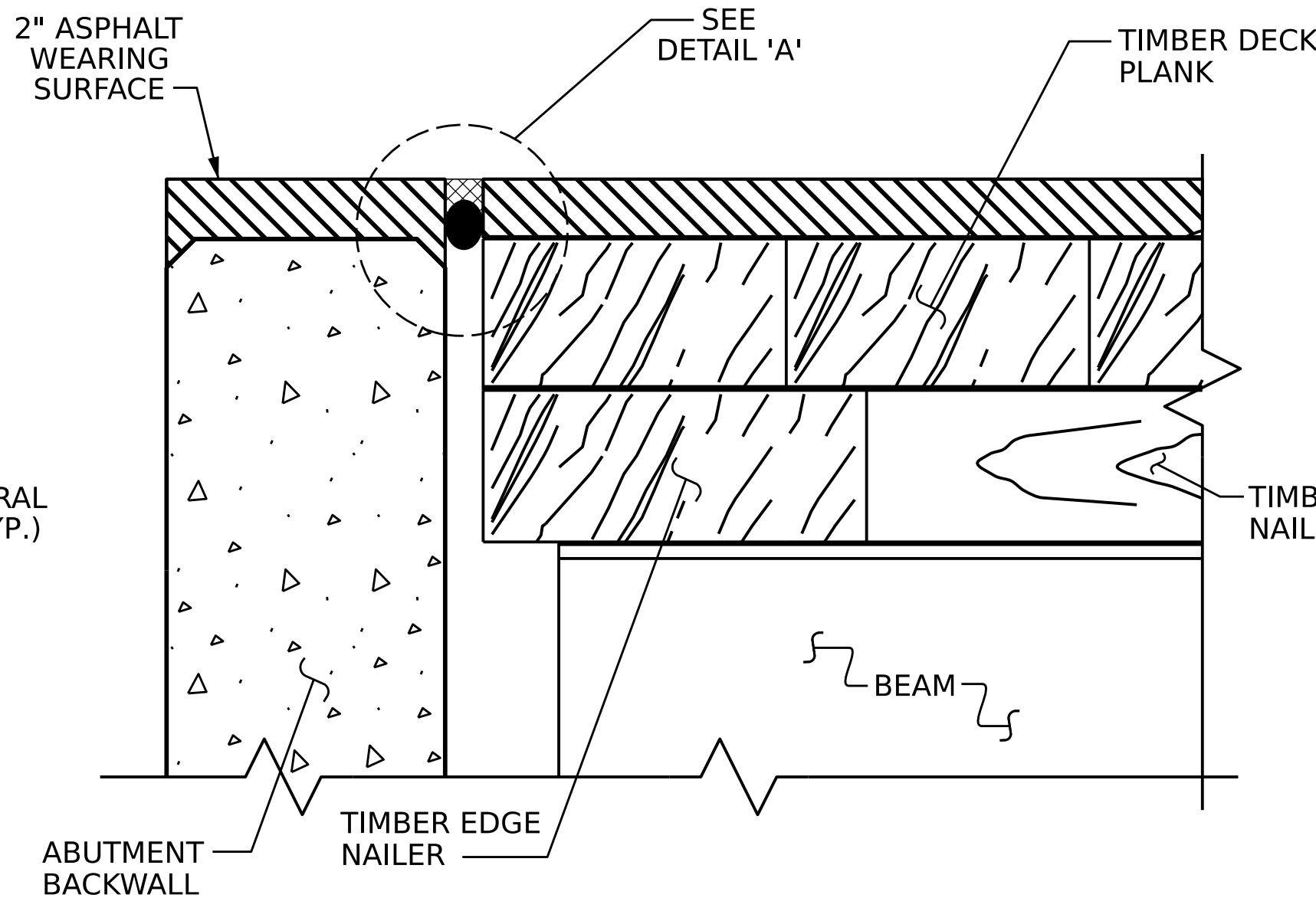
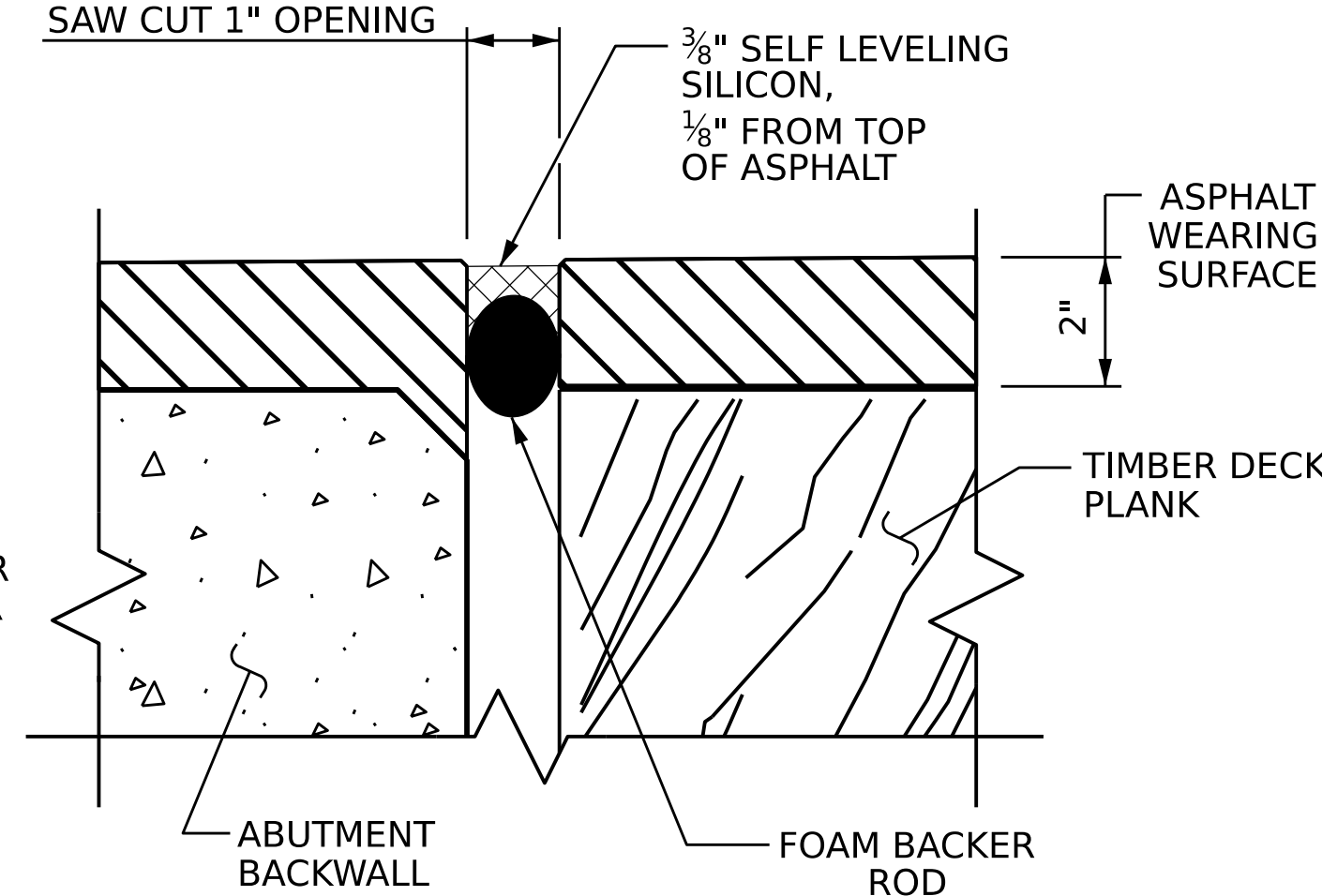


TYPICAL DECK DETAIL AT ABUTMENT

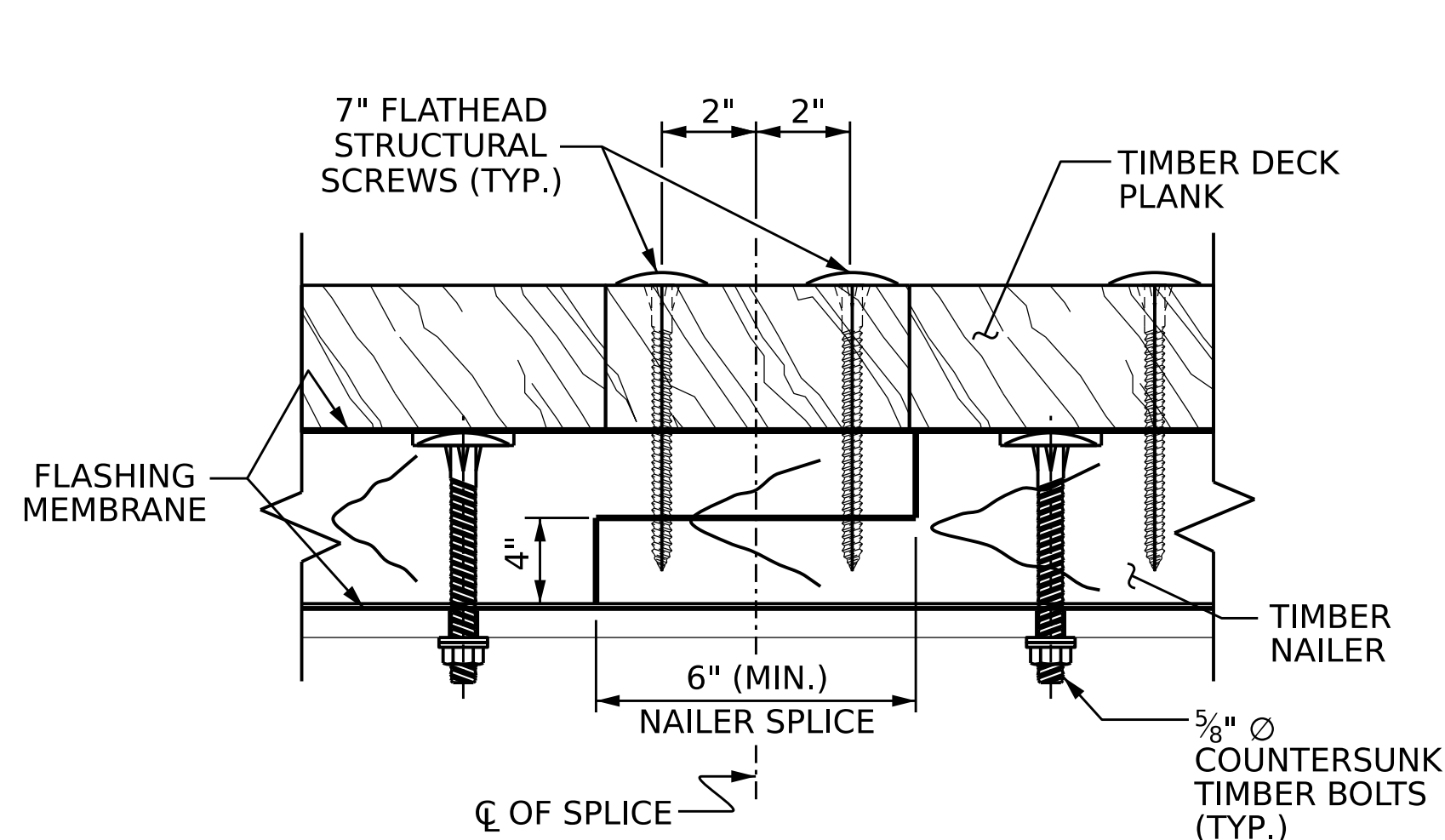


PROPOSED POURABLE SILICONE JOINT DETAIL

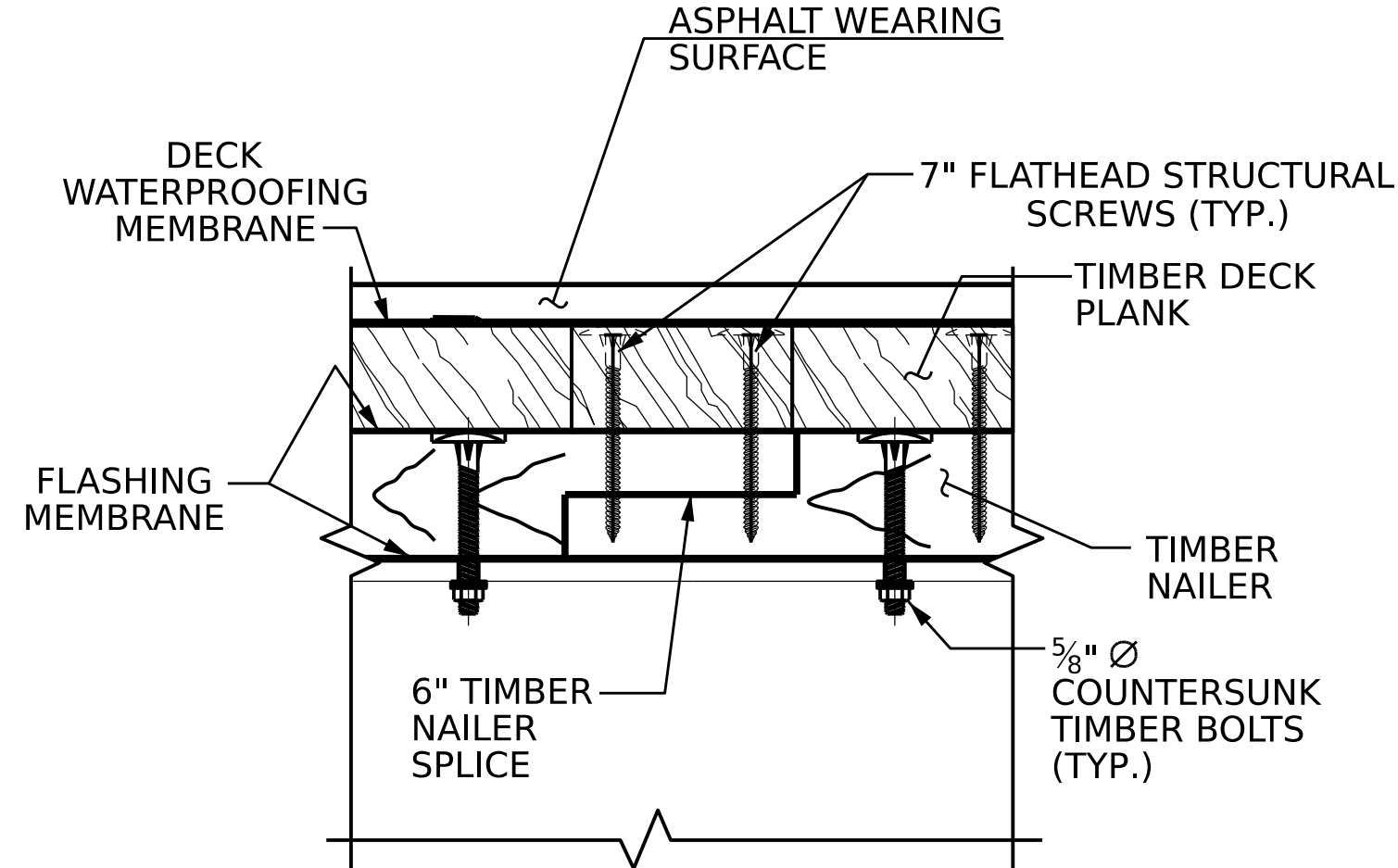


DETAIL 'A'

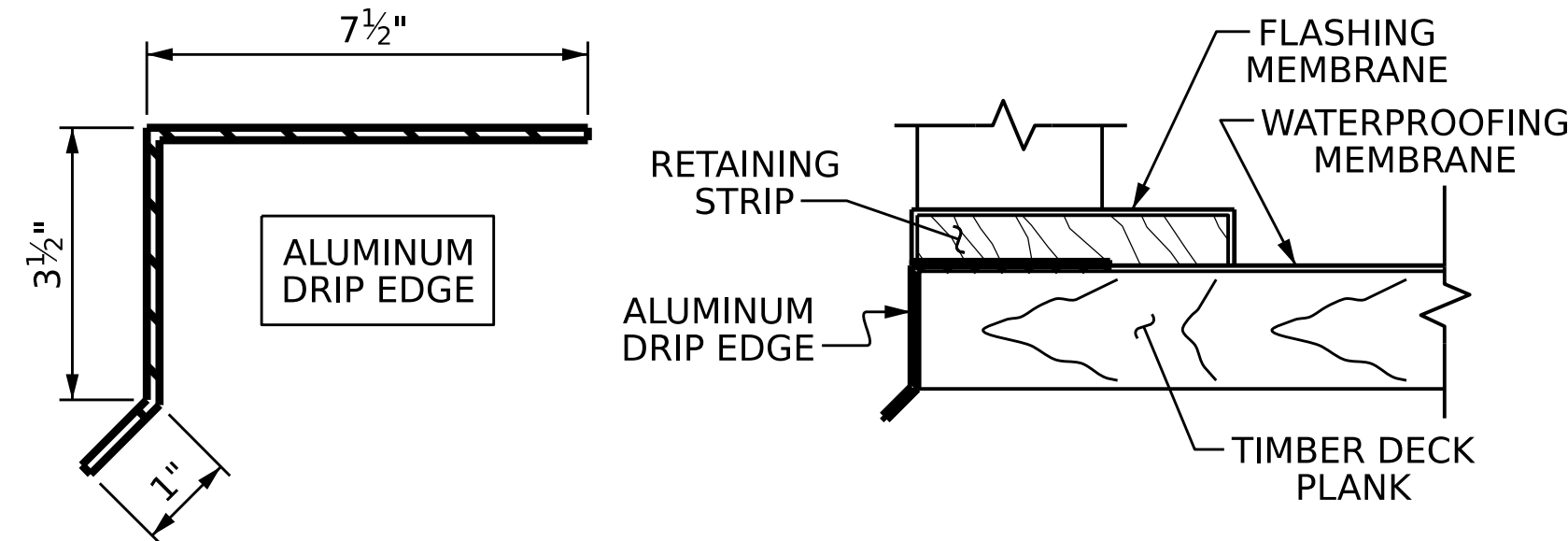
BILL OF MATERIAL FOR 2-30 FT. SPANS			
TREATED LUMBER			
ITEM	SIZE	LIN. FT.	
TIMBER DECK PLANKS	4"x8"	1,722.0	
TIMBER NAILERS	4"x12"	456.0	
TIMBER EDGE NAILERS	4"x12"	41.0	
RETAINING STRIP	2"x10"	116.0	
TOTAL TREATED LUMBER		2,335.0	LIN. FT.
FLASHING MEMBRANE			
ITEM	SIZE	LIN. FT.	
TOP OF BEAM	25 MILS	455.0	
TOP OF TIMBER NAILERS	25 MILS	446.0	
TOP OF TIMBER EDGE NAILERS	25 MILS	40.0	
FLASHING MEMBRANE		941.0	LIN. FT.
HARDWARE			
ITEM	Nos.	SIZE	LBS.
5/8" Ø TIMBER BOLTS	368	5/8"	264.6
HEAVY HEX NUTS	368	5/8"	43.8
STANDARD WASHER	736	5/8"	235.5
LOCK WASHER	368	5/8"	8.8
FLAT HEAD STR. SCREWS	1660	7"	110.7
HARDWARE FOR CONNECTIONS			663.4 LBS.
DECK WATERPROOFING MEMBRANE			
ITEM	SIZE	SQ. YDS	
DECK WATERPROOFING MEMBRANE	65 MILS.	127.0	
DRIP EDGE			
22 GA. ALUMINUM DRIP EDGE	SIZE 1'-0"	LIN. FT. 116.0	



NAILER SPLICE DETAILS



SECTION B-B



DRIP EDGDE DETAILS

POST AND BOLTS NOT SHOWN FOR CLARITY

PROJECT NO.: 18314.1044073

HAYWOOD COUNTY

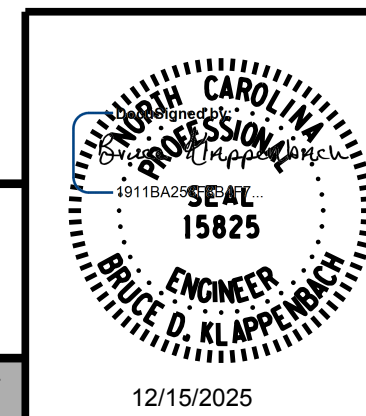
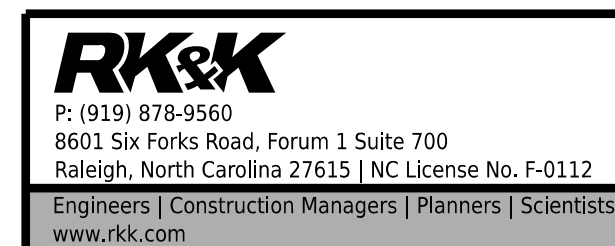
STATION: 12+13.00 -L-

SHEET 2 OF 2

STATE OF NORTH CAROLINA  
DEPARTMENT OF TRANSPORTATION  
RALEIGH

SUPERSTRUCTURE  
PLAN OF SPAN  
DETAILS

REVISIONS					SHEET NO.
NO.	BY:	DATE:	NO.	BY:	
1			3		S-9
2			4		TOTAL SHEETS 21



DOCUMENT NOT CONSIDERED FINAL  
UNLESS ALL SIGNATURES COMPLETED

DRAWN BY :	B. H. GONFA	DATE :	JUL 2025
CHECKED BY :	B. D. KLAPPENBACH	DATE :	JUL 2025
DESIGN ENGINEER OF RECORD:	B. D. KLAPPENBACH	DATE :	JUL 2025